

Sierra Pin

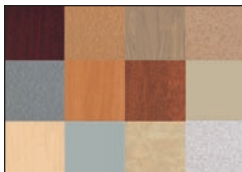
Adjustable Height Workcenters—Pin-Set, Seated Height Range



Sierra's transitional design works everywhere



Pin sets in 1" increments for complete BIFMA height range



Over 50 standard laminate options available



Sierra tool bar provides ready access to work tools

Thin Pin

Sierra comes in an equally sleek pin-set version. A smart alternative in settings where only the occasional change in seated height is needed.

An ergonomic—and economic—solution

For today's multishift, job-sharing offices, the Workrite Sierra™ Pin offers maximum flexibility and economy in the seated position. In typical office environments where employees move frequently, the Sierra Pin permits facilities personnel to quickly and easily calibrate each workcenter to its new owner.

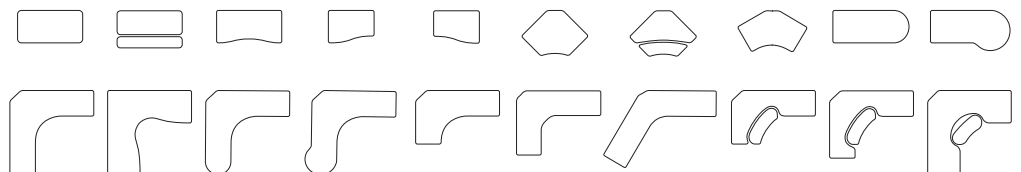
Stylish leg profile provides robust support

Readily adjust the height in 1" increments to achieve full 5th–95th percentile height range support for seated workers. With 250 pounds of support in over a dozen shapes and our full range of laminate and trim options, the Sierra Pin is a sturdy stalwart for virtually any office.

LEED eligibility

All Sierra Electric workcenters exceed LEED requirement MR4.2 (20% recycled content) with a minimum of 42% LEED recycled content, and 35% for base only models.

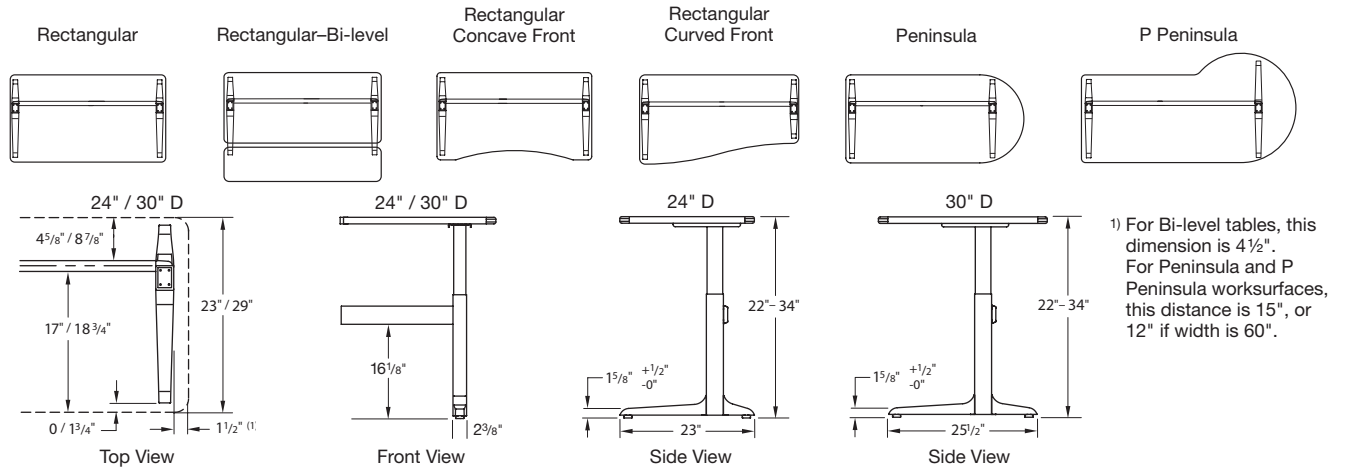
Statement of Line



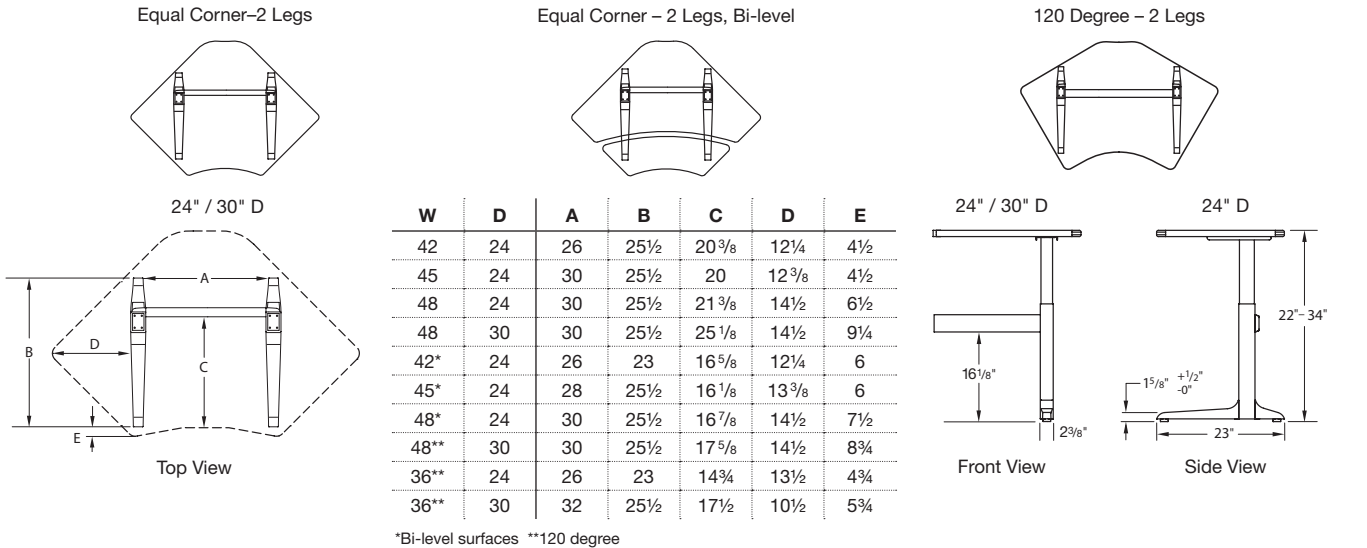
At Workrite we believe every body has a right to work comfortably and safely for maximum productivity. You can trust Workrite, as 75% of Fortune 100 companies have, for solutions that fit today's diverse range of workers.

Sierra Pin Adjustable Height Workcenters—Pin-Set, Seated Height Range

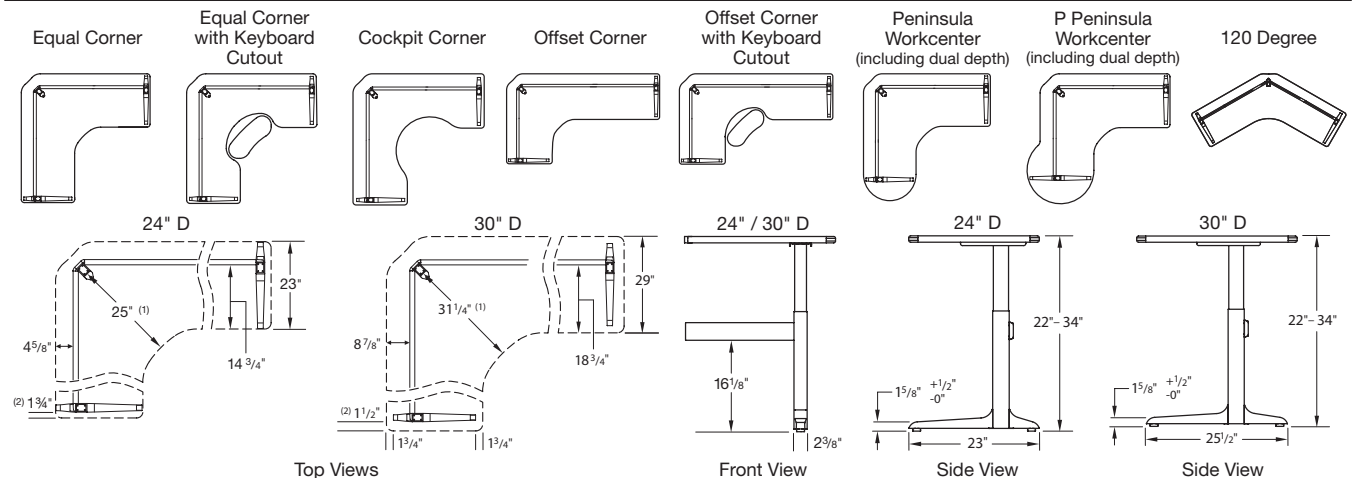
Straight



Small Corner



Three-Leg Corner



- 1) 120 Degree Tables: 19 1/2" / 24 1/2"; Cockpit Corner: 25"
 2) 120 Degree Tables: 5"; all Peninsula ends: 15"



©2009 Workrite Ergonomics
 All referenced company and product names
 are trademarks, registered trademarks or
 copyrights of their respective holders.

Workrite Ergonomics, Inc.
 1450 Technology Lane,
 Petaluma, CA 94954
 www.workriteergo.com
 800.959.9675

Workrite
 ergonomics®

1400207-0409 Subject to change without notice.