



Highlights



- Creates a complete and compact workstation
- Effortlessly and independently position the LCD and keyboard to the most comfortable viewing and typing position, all while maintaining eye contact with your patient
- Save space—fold up the workstation tight against the wall when not in use
- Integrated cable management and cable channels organize and route cables out of the way
- Easily adjust height of components on Wall Track by loosening set-screws
- Open design for future hardware upgrades
- Convenient bifocal viewing: screen lowers and positions for optimized viewing by users with bifocal glasses

Ergotron®

LX Wall Mount System

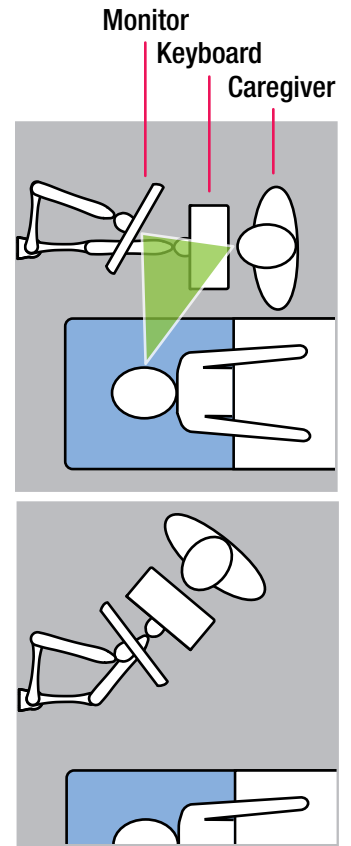


Complete, compact wall-mount workstation

Effortlessly and independently position the LCD and keyboard to the most comfortable viewing and typing position, all while maintaining eye contact with your patient. When not in use, simply push the system and fold it up tight against the wall.



- CPU size range: 2–8" (5–20 cm) wide
- CPU Holder includes theft deterrent anchor holes for cable locks and fasteners for locking the holder's width
- Patented CF motion technology provides premium ease-of-use display and keyboard adjustment
- Mounting standards: VESA FDMI, MIS-D, 75/100, C (hole patterns = 100 x 100 mm and 75 x 75 mm)
- Durable, easy-to-clean exterior composed of aluminum, high-grade plastic and powder-coated painted steel



Product Name	LX Wall Mount System
Part Number	45-238-194 (silver) 45-238-195 (black)
Product Includes	LX Wall Mount LCD Arm, LX Keyboard Arm, 34" Wall Track with (2) black track covers, 10" Wall Track, CPU Holder, (2) 24" cable channels, Wall Track mounting kit for hollow walls, Wall Track fasteners for concrete and wood, CPU and Arm track mount bracket kits, CPU direct wall mount kit, wrist rest, mouse holder, integrated keyboard tray with left/right mouse tray, cable ties
Shipping Dimensions	36.5" x 9.25" x 15.25" (927 x 235 x 387 mm)
Shipping Weight	49 lbs (22,2 kg)
Warranty	5 years
Compatible Display(s)	Almost any VESA compliant monitor up to 24" VESA FDMI, MIS-D, 75/100, C (hole patterns = 100 x 100 mm and 75 x 75 mm)



LCD Size	Weight Capacity*	Lift**	Tilt	Pan	Rotation	VESA
≤ 24"	≤ 20 lbs ≤ 9,1 kg	13" 33 cm	80°	180°	90° P/L	MIS-D

*Weight Capacity: display = 20 lbs (9,1 kg); keyboard = 5 lbs (2,2 kg); CPU = 40 lbs (18 kg).
Monitor depth greater than 2" (5 cm) may diminish capacity
**Lift: display = 13" (33 cm); keyboard = 11.5" (29 cm)

© 2009 Ergotron, Inc. rev. 07/10/2009 870-05-097-EA Content is subject to change without notification

Americas Sales and Corporate Headquarters

St. Paul, MN USA
(800) 888-8458
+1-651-681-7600
www.ergotron.com
sales@ergotron.com

EMEA Sales

Amersfoort, The Netherlands
+31 33 45 45 600
www.ergotron.com
info.eu@ergotron.com

APAC Sales

Tokyo, Japan
www.ergotron.com
info.apac@ergotron.com

Worldwide OEM Sales

www.ergotron.com
info.oem@ergotron.com

