

TECHNICAL DATA SHEET - Encore™ Projector Mount

peerless®
Solid Solutions - Solid Support™

MODEL: PJRL 411
Protected by U.S. Patent No. 6,042,068

The **Encore Projector Mount** is designed for flush mounting to a structural or finished ceiling and can be lowered with the addition of an extension column and ceiling attachment plate which are sold separately. Must be used in conjunction with a PAP adapter plate (sold separately).

Features:

- 20° (+5°, -15°) pitch, 10° (±5°) roll, 360° yaw (if used with extension column)
- Quick release spring latch with optional security lock
- Interchangeable/compatible with all Peerless Projector Adapter Plates (PAP models)
- Security fasteners at every connection point
- Scratch resistant black fused epoxy finish

Accessories:

- Ceiling Attachment Plates (for use with Extension Columns)
- Fixed and Adjustable length 1 1/2" NPT Extension Columns ("EXT" or "ADJ" models)*
- Concrete Anchors (accessory kit ACC 200)
- Cord wrap (ACC 852[W] & ACC 856[W])
- Vibration Absorber (ACC 840 & ACC 845) (for use with extension columns)
- Armor Lock Plus™ security cables (ACC 020 and ACC 021)

* **IMPORTANT:** For extension column applications an additional ceiling plate must be purchased

Dimensions:

Weight: 3 lb (.76 kg)

Shipping weight: 4 lb (102 kg)

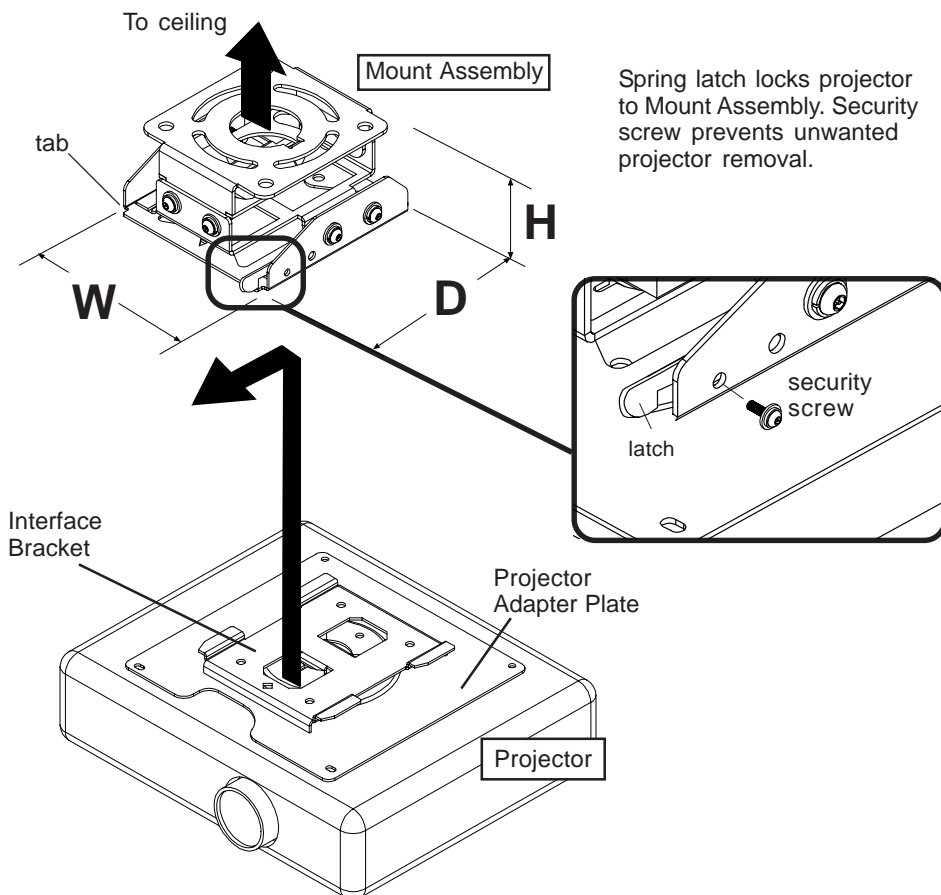
Maximum Load Capacity: 50 lb (22.7 kg)

Shipping Carton dimensions:

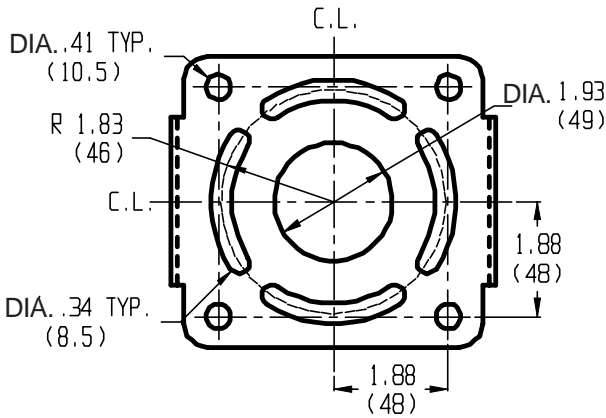
L= 9.75 in (247.7 mm) W= 6 in (152 mm)

H= 6 in (152 mm)

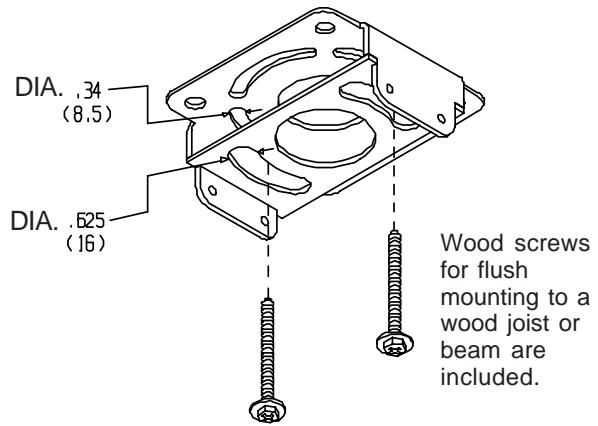
Mount Assembly Dimensions Only	
W	4.75" (121 mm)
D	5.25" (133 mm)
H	3" (76 mm)



Ceiling Plate Dimensions

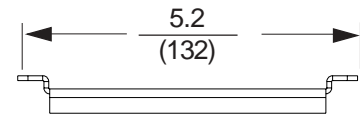
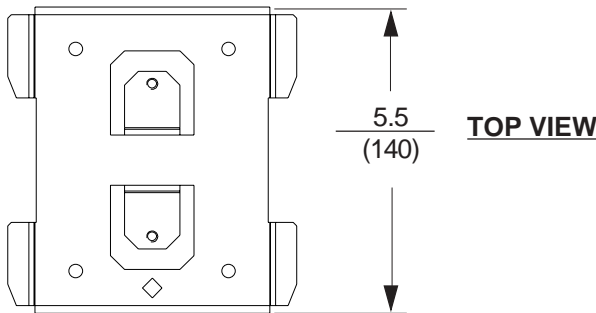


TOP VIEW-CEILING PLATE MOUNTING HOLE PATTERN

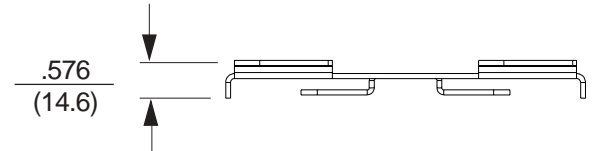


ISOMETRIC VIEW - FROM BELOW

Interface Bracket Dimensions Only



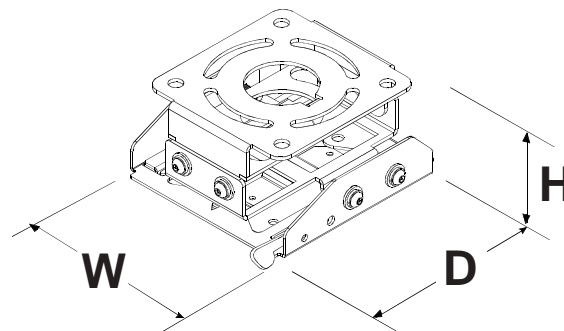
FRONT VIEW



SIDE VIEW

Mount Assembly With Interface Bracket Dimensions

W	4.75" (121 mm)
D	5.25" (133 mm)
H	3.576" (76 mm)



ARCHITECTS SPECIFICATIONS

The Encore projector mount shall be a Peerless model PJRL 411 and shall be mounted where indicated on the plans. It shall mount directly to any PAP model adapter plate using security fasteners. It shall feature 20° (+5°, -15°) pitch, 10° (±5°) roll and 60° (360° when used with an extension column) yaw. It shall have a quick release spring latch for easy removal and installation of the projector. It shall include fasteners for direct attachment to a finished ceiling and be structural ceiling, threaded rod and extension column compatible. It shall feature a locking screw to prevent unwanted rotation (for extension column installations) and a quick release latch lock to prevent unwanted projector removal. It shall be constructed of steel and finished in (black, white, grey) fused epoxy. Installation and assembly shall be done in accordance with the instructions provided by the manufacturer.

Protected by U.S. Patent numbers 6,042,068.